



GMT MONTHLY MEMBERSHIP PROGRESS REPORT

Results as of: 3/31/2018

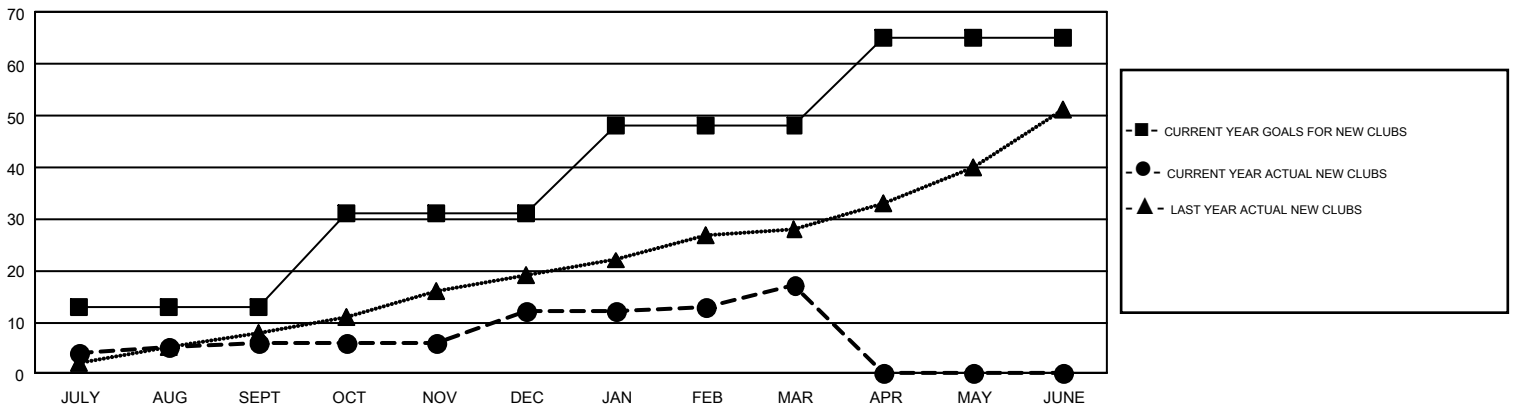
GMT Constitutional Area 1, Group H

GMT: HOWARD HUDSON

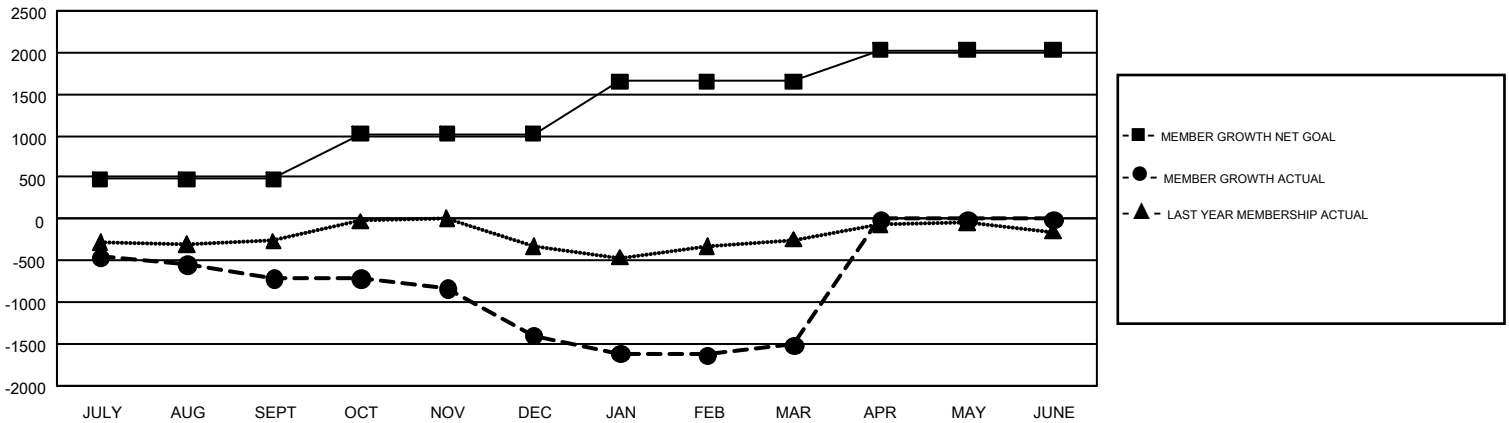
REPORT DOES NOT INCLUDE CLUBS IN UNDISTRICTED AREAS.

Clubs				Members			
RESULTS FOR 2017-2018				RESULTS FOR 2017-2018			
QUARTER	NEW CLUB GOAL	NEW CLUBS	DROPPED CLUBS	QUARTER	MEMBER GROWTH NET GOAL	MEMBER GROWTH ACTUAL	DROPPED MEMBERS ACTUAL (including transfers)
JULY/AUG/SEPT	13	6	8	JULY/AUG/SEPT	481	1,446	1,923
OCT/NOV/DEC	18	6	26	OCT/NOV/DEC	541	1,130	1,731
JAN/FEB/MAR	17	5	8	JAN/FEB/MAR	629	1,400	1,355
APR/MAY/JUNE	17	0	0	APR/MAY/JUNE	379	0	0

GOALS AND ACTUAL NEW CLUBS CUMULATIVE



GOALS AND ACTUAL MEMBERS CUMULATIVE



DROPPED CLUBS: 42	857 CLUBS OF 1,437 ADDED 1 OR MORE NEW MEMBERS	GENDER DISTRIBUTION MALE 23,838 (62.33%) FEMALE 14,405 (37.67%)
DROPPED MEMBERS DECEASED 387 CLUB CANCELLED 403 OTHER 4,217 <hr/> TOTAL 5,007	CLICK HERE FOR CUMULATIVE MEMBERSHIP DATA	TOTAL FAMILY UNIT MEMBERS 7,739 FAMILY MEMBERS PAYING HALF DUES 4,007